



# LAKE PARK

*Studios*



WELCOME  
TO TAJCITY

# CAIRO REIMAGINED

Welcome to a fresh outlook on Cairo; where a vibrant and lively community resides. We've reimagined the best of Cairo's wonders, nature's finest allure and global architectural standards, to bring you one of the lushest and aesthetically decorous developments found in the lively heart of the city. Welcome to an all new Reimagined Cairo.



## A STRATEGIC LOCATION

# LOCATION MAP

Located just a few minutes from Heliopolis and within close proximity to Mirage City, Taj City is bordered in the heart of the local scene, just so you don't miss out everything that matters to you. With New Cairo on the southern East and Heliopolis in the North; Taj City is surrounded with every convenient amenity, including the ring road, as the pulses of Greater Cairo emanate from Taj City's avid locale.





# MASTER PLAN

The first and foremost destination for quality living starts here. Living in a fully integrated and gated community master planned by world-renowned Benoy, comes to you in a location that's situated in New Cairo and is never secluded from charming Cairo; active spots like Downtown, Heliopolis, Maadi and even the Cairo Airport are only minutes away.

Your home comes with a variety of amenities, including an international school, several medical facilities, a strip mall with an outdoor shopping area, as well as a business district, swimming pools, gyms and many more.

# INTRODUCING LAKEPARK STUDIOS

## LAKE PARK *Studios*

Introducing Lake Park Studios, a unique modular community that brings together a wide selection of vistas and modular, customizable homes. Distinguish yourself from the rest of the community as boundless spacing and interior choices are yours to pick and choose from.

The studios are surrounded with an enchanting park, a one of a kind premier view to the city and a variety of water features that are refreshing. Spacing choices may be based on your perfectly imagined dream home or may steer in the direction of innovation and globally standardized interiors that are paletted to complement our gracious exteriors. We know that less rooms mean less space for things to get away from you. Your laptop, that sketch, your notes and your drink will always be nearby. Lake Park Studios will keep you focused on the essentials, keep up with efficiency, and plan ahead to ensure maximum productivity, and a holistic experience of comfort.





# CUSTOMIZE YOUR SPACE

A vibrant home is a practical home. With modular, tangible spaces and a verdant landscape that overlooks our charming Lake Park. The Studios come with a distinct privilege of moulding and revamping your own home, whichever way you like.

The studios are surrounded with attractive water features that compliment your home; inside, out. Embellish your own space with a few impactful pieces or go even further to combine and open up units to recreate a vaster interior. No matter the purpose, Lake Park Studios serve as a retreat or a young couple's haven that prioritizes outlook alongside decorous interiors.

## ALL ABOUT PERSPECTIVE

# PICK YOUR VIEW

Yes, you're able to pick and choose; mix and match and play around with your interiors and views as much as possible. You may choose to overlook the verdant greenery, opt towards a lush landscape or have a pinnacle view of the city ahead. You may also

enjoy the aesthetics of pure, nature with an immersive lake view that's meant to spark your inner creativity. Our limitless selection of spaces and interiors are meant for your blending pleasure, or rather a classical take at one.



INGENUITY  
AT ITS FINEST

# FIND YOUR INSPIRATION

“Happiness is not something you postpone for the future; it is something you design for the present”

- Jim Rohn,  
American Entrepreneur

Whether it stems from nature’s simplest details or a grander outlook on your surroundings; inspiration remains key in determining your favorite place to setup a home. Hone your inner nature lover and live by the lake where daily strolls and the Kids’ park ease you and your child from stressful daily routines; you may choose to be a little more urban and base your choice of living in the limelight of the city that compliments urban inspired interiors.

Find your own inspiration that is available to you in a variety of living options that praise your taste and care for your lifestyle. A wide range of amenities are right at your fingertips, from gyms to play areas; the studios will open up a broader spectrum of life that goes beyond your imagination, yet is well within tangible reach.





## AMENITIES

# LIVING ESSENTIALS

Lake Park Studios come with an array of benefits and services that are here to cater to your comfort and the essentials that go along with it.

From convenience laundry and dry cleaning to a fully equipped gym and outdoor communal hub; the community offers a wide range of fully fledged good turns to cater to your everyday well being.



## AMENITIES

# EVERYDAY SERVICES

With housekeeping amenities at your service, your home is our number 1 priority.

We've made sure that our staff and home keeping professionals are up to quality health and hospitality standards that ensure your peace of mind.



# FLOOR PLANS

# SITE LAYOUT



SHALYA ZONE

LAKE PARK  
*Studios*

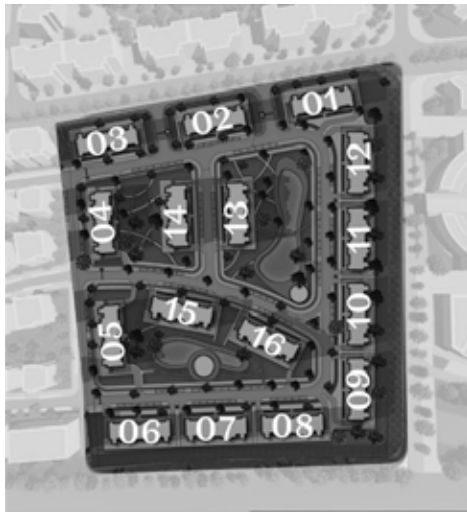
# LAKE PARK STUDIOS



# GROUND FLOOR

# GROUND FLOOR

## BLDGS. ST 01: ST 16



### DISCLAIMER

1. Room dimensions are consistent with structural elements and do not include wall finishes or additional structural elements.
2. Diagrams are not to scale and are for illustrative purpose only.
3. MNHD reserves the right to make minor alterations.
4. All rendering and other visual materials, designs, facades are for demonstrative purpose only and are subject to change.
5. All units will be delivered without internal finishes "Brick Walls Only".

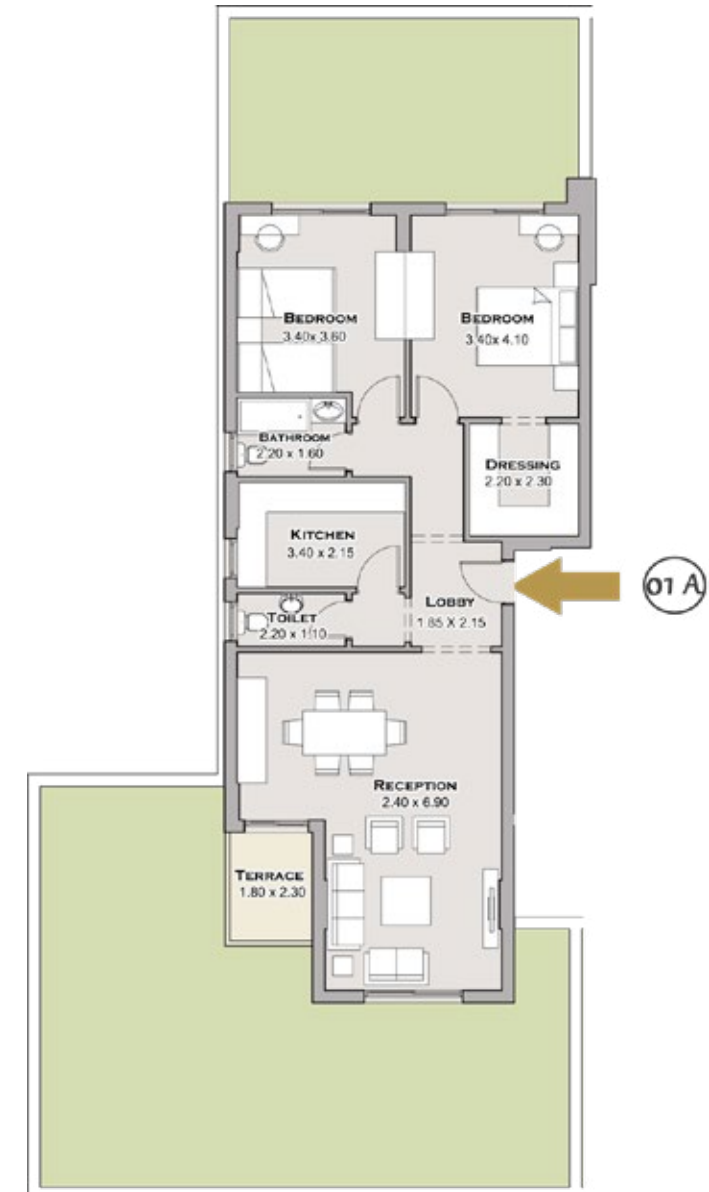
# GROUND FLOOR

# GROUND FLOOR

## BLDGS. ST 01: ST 16

### APARTMENT 01A

TOTAL GROSS AREA	126 m <sup>2</sup>
TOTAL GREEN AREA	98 m <sup>2</sup>



GROUND FLOOR

#### DISCLAIMER

1. Room dimensions are consistent with structural elements and do not include wall finishes or additional structural elements.
2. Diagrams are not to scale and are for illustrative purpose only.
3. MNHD reserves the right to make minor alterations.
4. All rendering and other visual materials, designs, facades are for demonstrative purpose only and are subject to change.
5. All units will be delivered without internal finishes "Brick Walls Only".

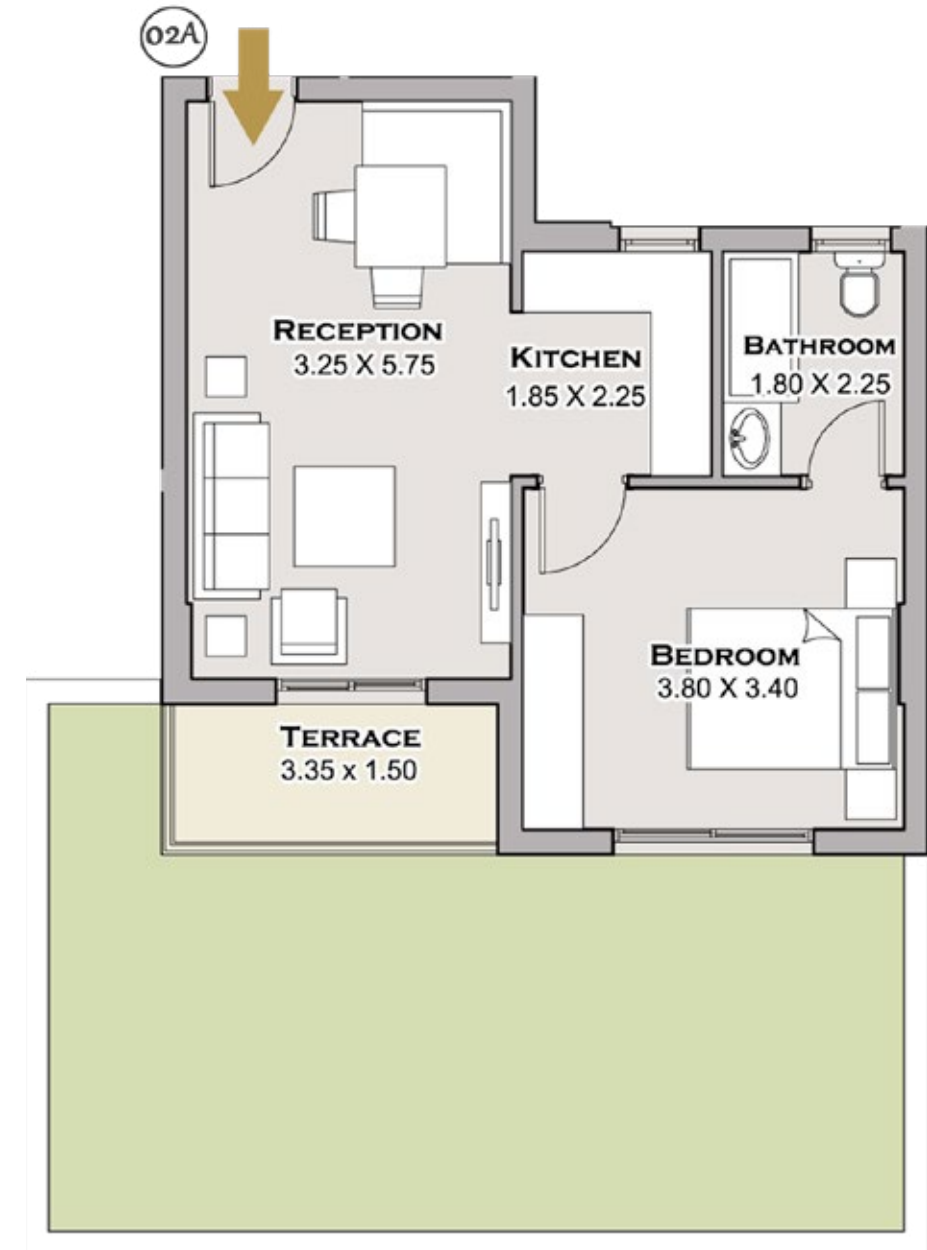


# GROUND FLOOR

## BLDGS. ST 01: ST 16

### APARTMENT 02A

TOTAL GROSS AREA	64 m <sup>2</sup>
TOTAL GREEN AREA	37 m <sup>2</sup>



GROUND FLOOR

DISCLAIMER  
1. Room dimensions are consistent with structural elements and do not include wall finishes or additional structural elements.  
2. Diagrams are not to scale and are for illustrative purpose only.  
3. MNHD reserves the right to make minor alterations.  
4. All rendering and other visual materials, designs, facades are for demonstrative purpose only and are subject to change.  
5. All units will be delivered without internal finishes "Brick Walls Only".

# GROUND FLOOR

## BLDGS. ST 01: ST 16

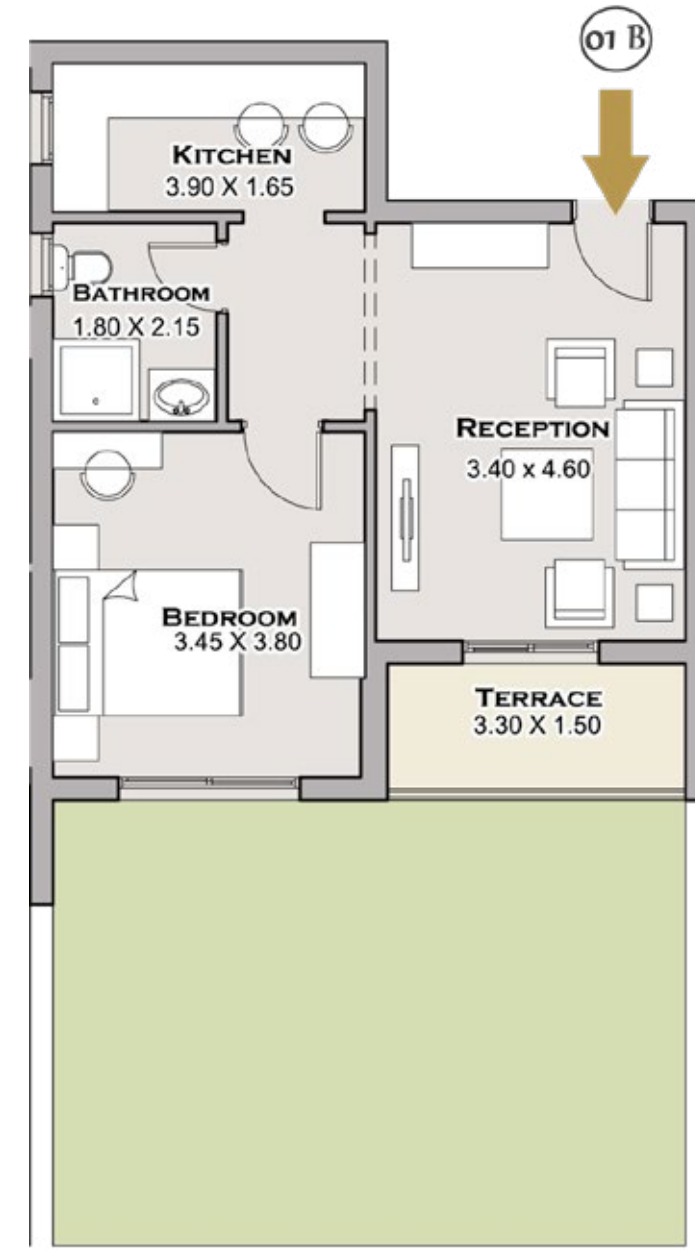
### APARTMENT 01B

TOTAL GROSS AREA	66 m <sup>2</sup>
TOTAL GREEN AREA	37 m <sup>2</sup>



#### DISCLAIMER

1. Room dimensions are consistent with structural elements and do not include wall finishes or additional structural elements.
2. Diagrams are not to scale and are for illustrative purpose only.
3. MNHD reserves the right to make minor alterations.
4. All rendering and other visual materials, designs, facades are for demonstrative purpose only and are subject to change.
5. All units will be delivered without internal finishes "Brick Walls Only".



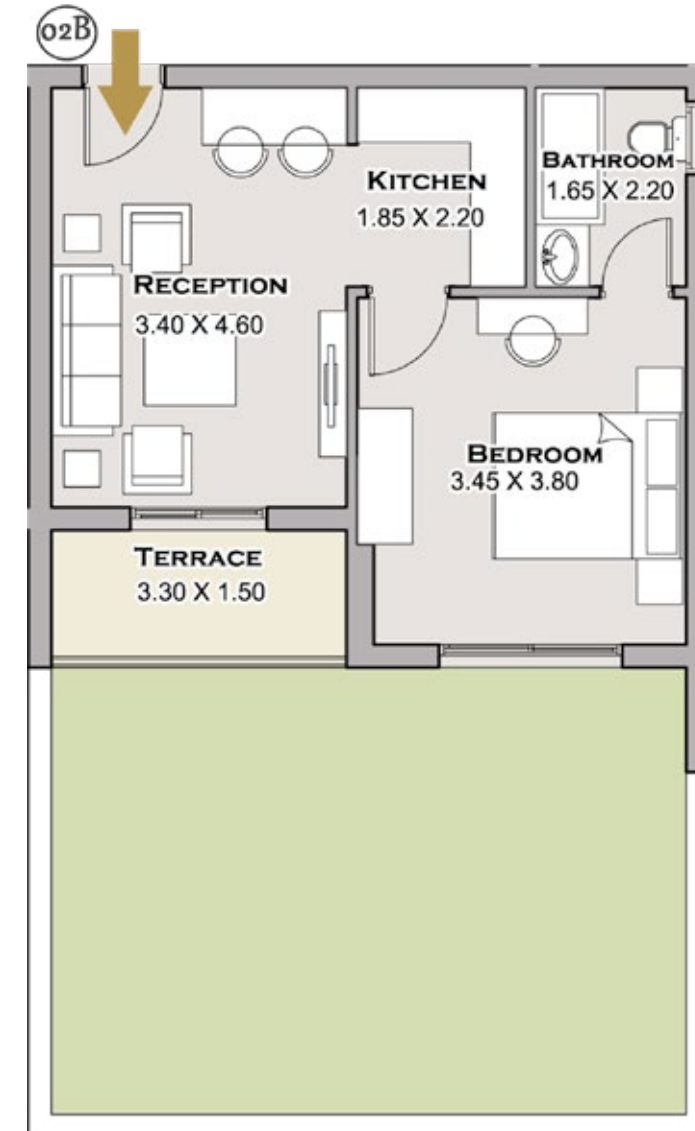
GROUND FLOOR

# GROUND FLOOR

## BLDGS. ST 01: ST 16

### APARTMENT 02B

TOTAL GROSS AREA	58 m <sup>2</sup>
TOTAL GREEN AREA	37 m <sup>2</sup>



GROUND FLOOR

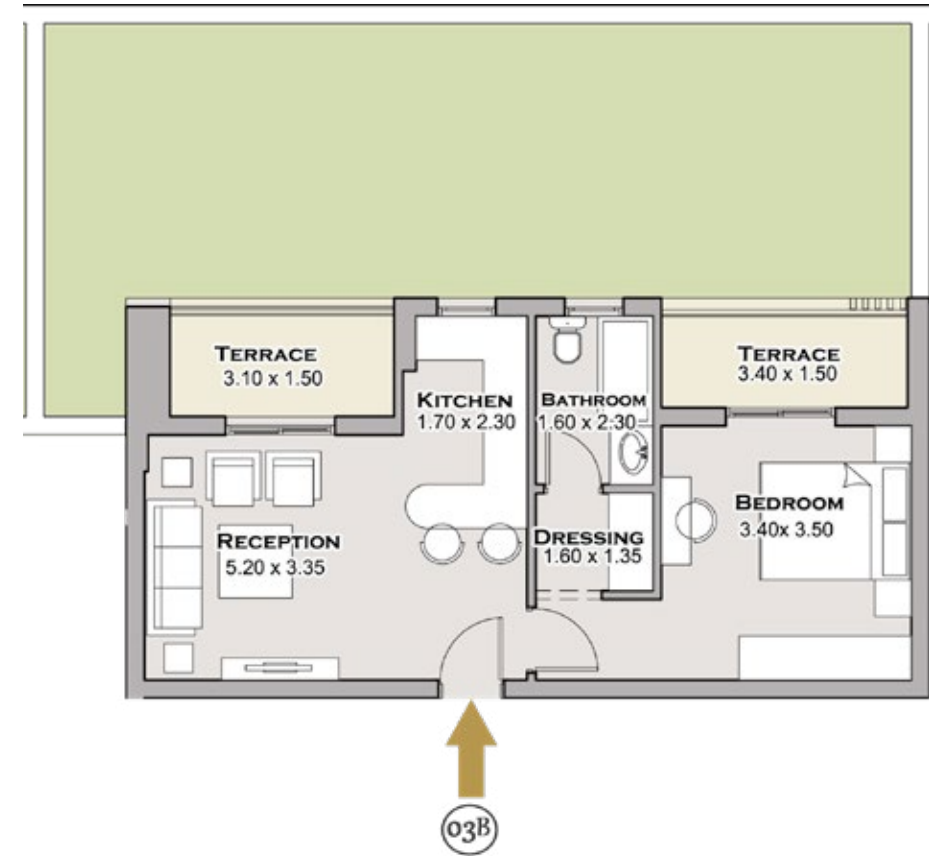
DISCLAIMER  
1. Room dimensions are consistent with structural elements and do not include wall finishes or additional structural elements.  
2. Diagrams are not to scale and are for illustrative purpose only.  
3. MNHD reserves the right to make minor alterations.  
4. All rendering and other visual materials, designs, facades are for demonstrative purpose only and are subject to change.  
5. All units will be delivered without internal finishes "Brick Walls Only".

# GROUND FLOOR

## BLDGS. ST 01: ST 16

### APARTMENT 03B

TOTAL GROSS AREA	72 m <sup>2</sup>
TOTAL GREEN AREA	51 m <sup>2</sup>



DISCLAIMER  
1. Room dimensions are consistent with structural elements and do not include wall finishes or additional structural elements.  
2. Diagrams are not to scale and are for illustrative purpose only.  
3. MNHD reserves the right to make minor alterations.  
4. All rendering and other visual materials, designs, facades are for demonstrative purpose only and are subject to change.  
5. All units will be delivered without internal finishes "Brick Walls Only".

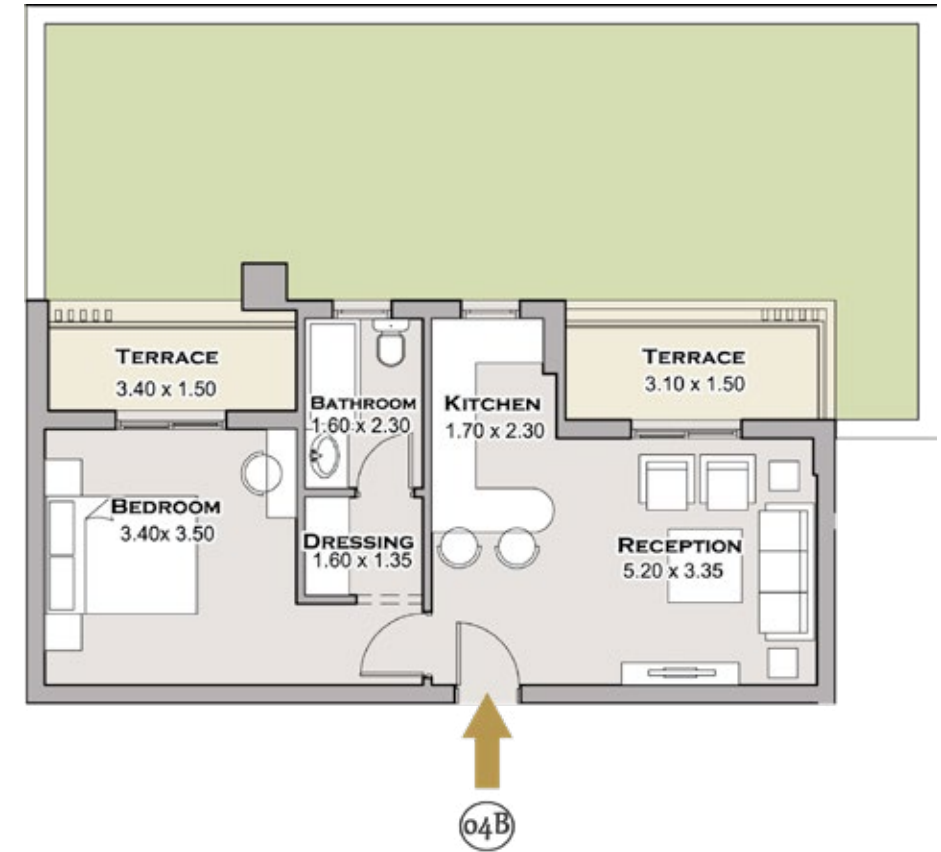
GROUND FLOOR

# GROUND FLOOR

## BLDGS. ST 01: ST 16

### APARTMENT 04B

TOTAL GROSS AREA	73 m <sup>2</sup>
TOTAL GREEN AREA	51 m <sup>2</sup>



GROUND FLOOR

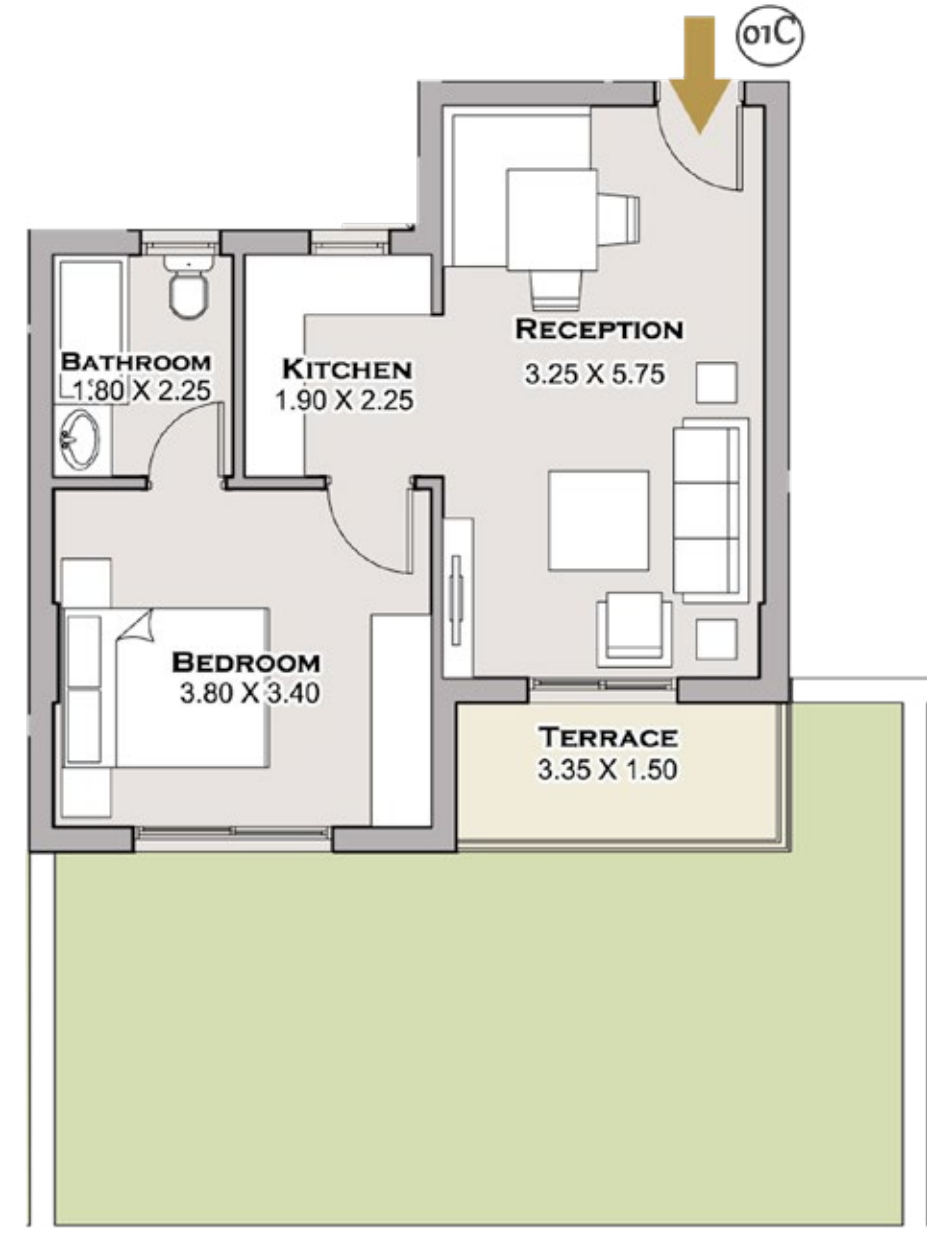
DISCLAIMER  
1. Room dimensions are consistent with structural elements and do not include wall finishes or additional structural elements.  
2. Diagrams are not to scale and are for illustrative purpose only.  
3. MNHD reserves the right to make minor alterations.  
4. All rendering and other visual materials, designs, facades are for demonstrative purpose only and are subject to change.  
5. All units will be delivered without internal finishes "Brick Walls Only".

# GROUND FLOOR

## BLDGS. ST 01: ST 16

### APARTMENT 01C

TOTAL GROSS AREA	64 m <sup>2</sup>
TOTAL GREEN AREA	37 m <sup>2</sup>



GROUND FLOOR

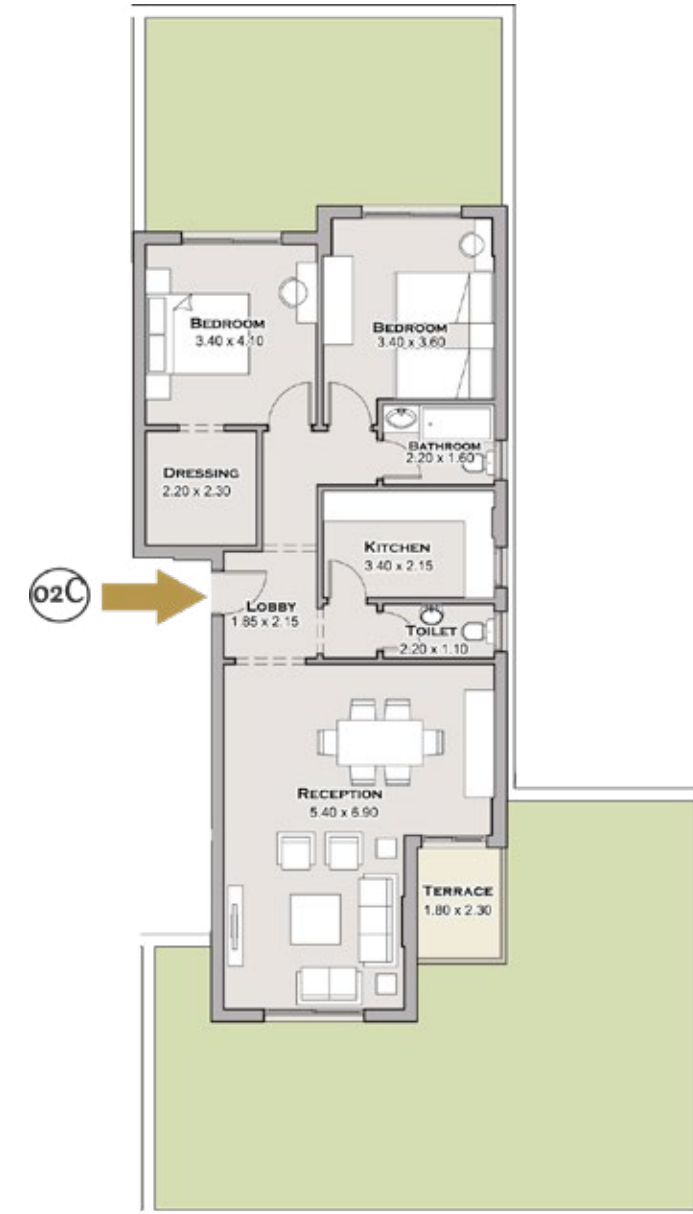
DISCLAIMER  
1. Room dimensions are consistent with structural elements and do not include wall finishes or additional structural elements.  
2. Diagrams are not to scale and are for illustrative purpose only.  
3. MNHD reserves the right to make minor alterations.  
4. All rendering and other visual materials, designs, facades are for demonstrative purpose only and are subject to change.  
5. All units will be delivered without internal finishes "Brick Walls Only".

# GROUND FLOOR

## BLDGS. ST 01: ST 16

### APARTMENT 02C

TOTAL GROSS AREA	123 m <sup>2</sup>
TOTAL GREEN AREA	100 m <sup>2</sup>



GROUND FLOOR

DISCLAIMER  
1. Room dimensions are consistent with structural elements and do not include wall finishes or additional structural elements.  
2. Diagrams are not to scale and are for illustrative purpose only.  
3. MNHD reserves the right to make minor alterations.  
4. All rendering and other visual materials, designs, facades are for demonstrative purpose only and are subject to change.  
5. All units will be delivered without internal finishes "Brick Walls Only".

# FIRST FLOOR



# FIRST FLOOR

# BLDGS. ST 01: ST 16



#### DISCLAIMER

1. Room dimensions are consistent with structural elements and do not include wall finishes or additional structural elements.
2. Diagrams are not to scale and are for illustrative purpose only.
3. MNHD reserves the right to make minor alterations.
4. All rendering and other visual materials, designs, facades are for demonstrative purpose only and are subject to change.
5. All units will be delivered without internal finishes "Brick Walls Only".

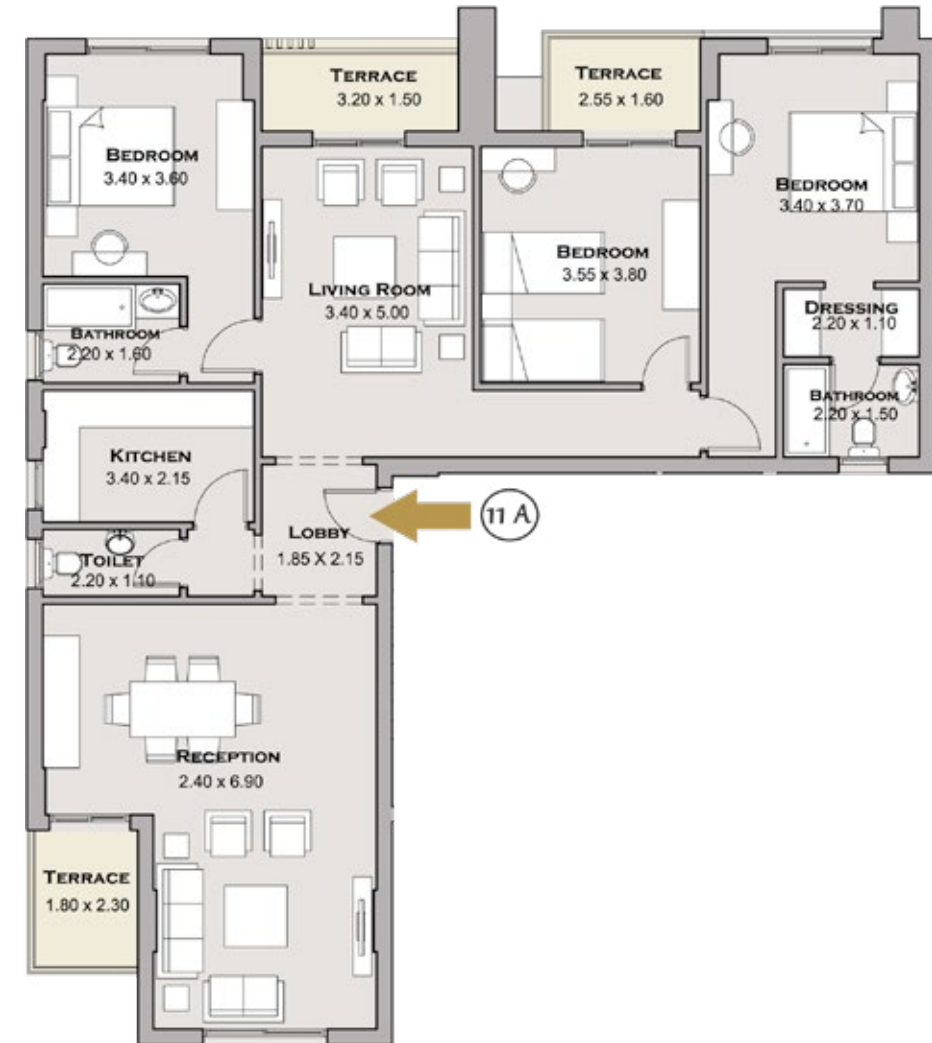
# FIRST FLOOR

# FIRST FLOOR

# BLDGS. ST 01: ST 16

## APARTMENT 11A

TOTAL GROSS AREA	185 m <sup>2</sup>
------------------	--------------------



FIRST FLOOR

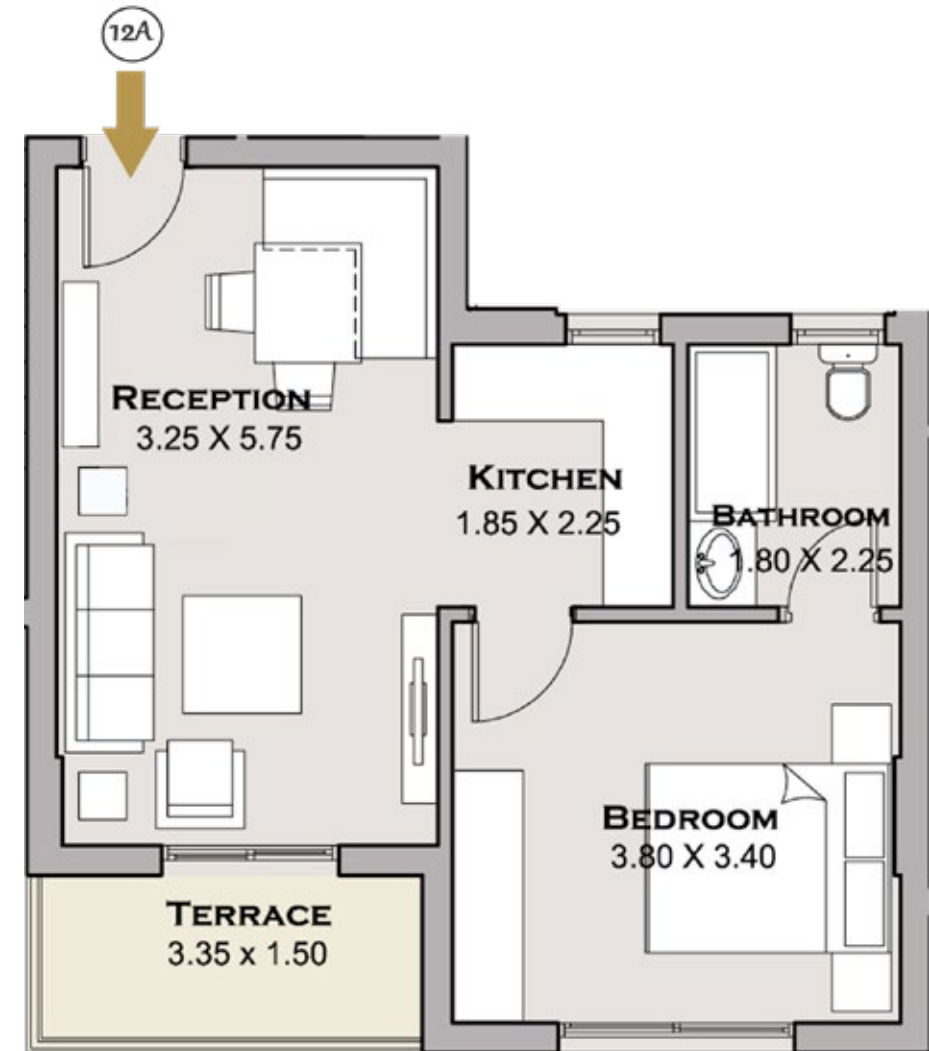
- DISCLAIMER
1. Room dimensions are consistent with structural elements and do not include wall finishes or additional structural elements.
  2. Diagrams are not to scale and are for illustrative purpose only.
  3. MNHD reserves the right to make minor alterations.
  4. All rendering and other visual materials, designs, facades are for demonstrative purpose only and are subject to change.
  5. All units will be delivered without internal finishes "Brick Walls Only".

# FIRST FLOOR

## BLDGS. ST 01: ST 16

### APARTMENT 12 A

TOTAL GROSS AREA	64 m <sup>2</sup>
------------------	-------------------



#### DISCLAIMER

1. Room dimensions are consistent with structural elements and do not include wall finishes or additional structural elements.
2. Diagrams are not to scale and are for illustrative purpose only.
3. MNHD reserves the right to make minor alterations.
4. All rendering and other visual materials, designs, facades are for demonstrative purpose only and are subject to change.
5. All units will be delivered without internal finishes "Brick Walls Only".

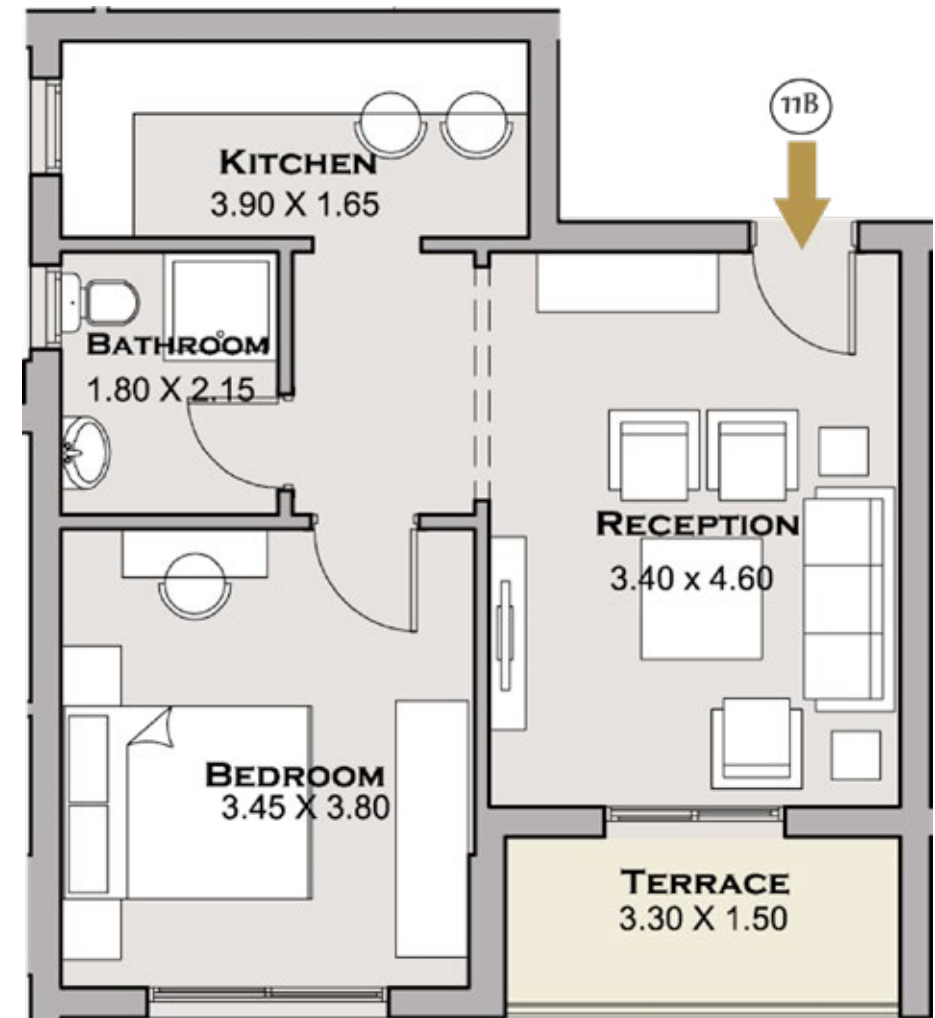
FIRST FLOOR

# FIRST FLOOR

# BLDGS. ST 01: ST 16

## APARTMENT 11B

TOTAL GROSS AREA	66 m <sup>2</sup>
------------------	-------------------



- DISCLAIMER
1. Room dimensions are consistent with structural elements and do not include wall finishes or additional structural elements.
  2. Diagrams are not to scale and are for illustrative purpose only.
  3. MNHD reserves the right to make minor alterations.
  4. All rendering and other visual materials, designs, facades are for demonstrative purpose only and are subject to change.
  5. All units will be delivered without internal finishes "Brick Walls Only".

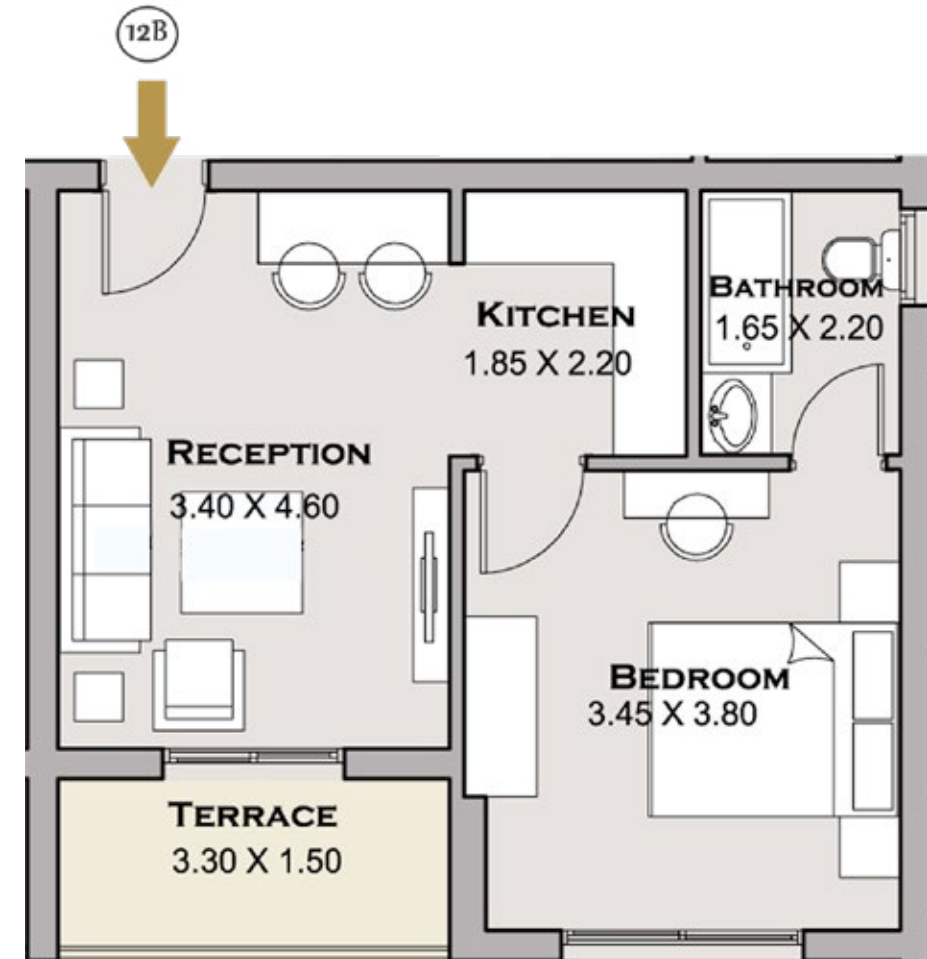
FIRST FLOOR

# FIRST FLOOR

# BLDGS. ST 01: ST 16

## APARTMENT 12 B

TOTAL GROSS AREA	58 m <sup>2</sup>
------------------	-------------------



DISCLAIMER  
1. Room dimensions are consistent with structural elements and do not include wall finishes or additional structural elements.  
2. Diagrams are not to scale and are for illustrative purpose only.  
3. MNHD reserves the right to make minor alterations.  
4. All rendering and other visual materials, designs, facades are for demonstrative purpose only and are subject to change.  
5. All units will be delivered without internal finishes "Brick Walls Only".

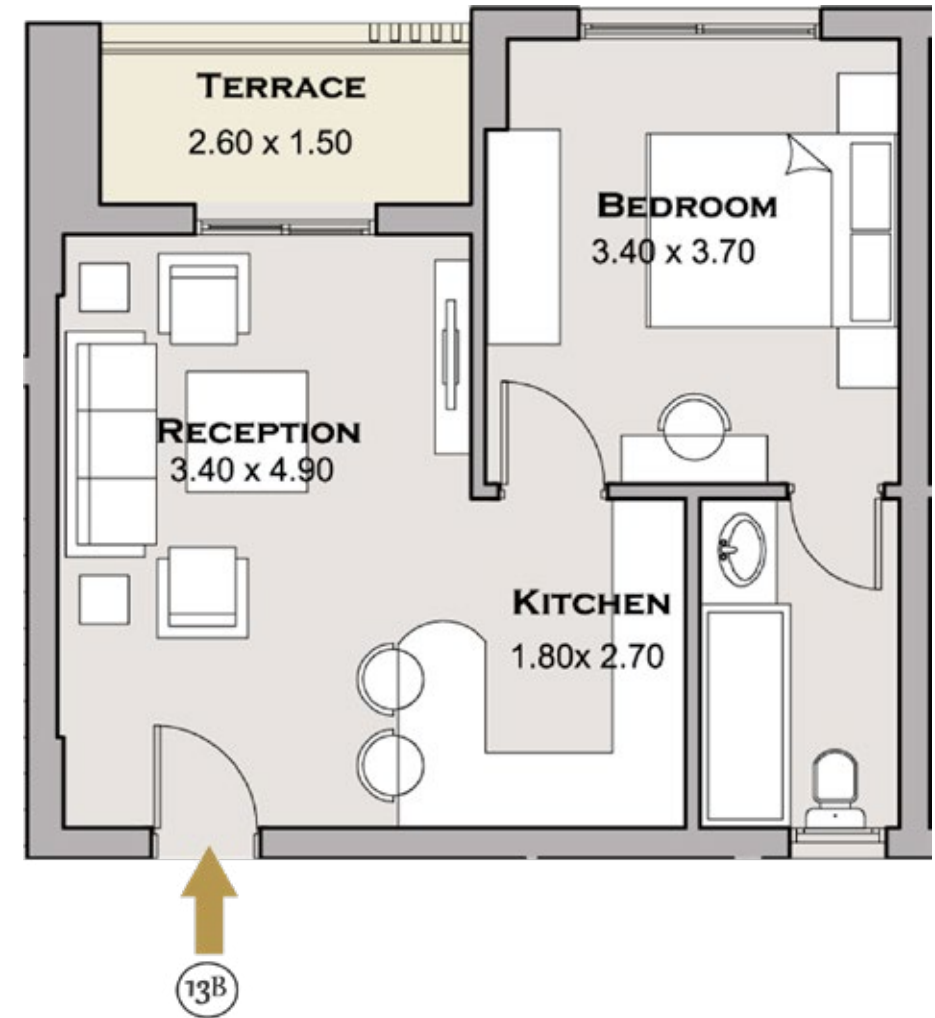
FIRST FLOOR

# FIRST FLOOR

## BLDGS. ST 01: ST 16

### APARTMENT 13 B

TOTAL GROSS AREA	62 m <sup>2</sup>
------------------	-------------------



- DISCLAIMER
1. Room dimensions are consistent with structural elements and do not include wall finishes or additional structural elements.
  2. Diagrams are not to scale and are for illustrative purpose only.
  3. MNHD reserves the right to make minor alterations.
  4. All rendering and other visual materials, designs, facades are for demonstrative purpose only and are subject to change.
  5. All units will be delivered without internal finishes "Brick Walls Only".

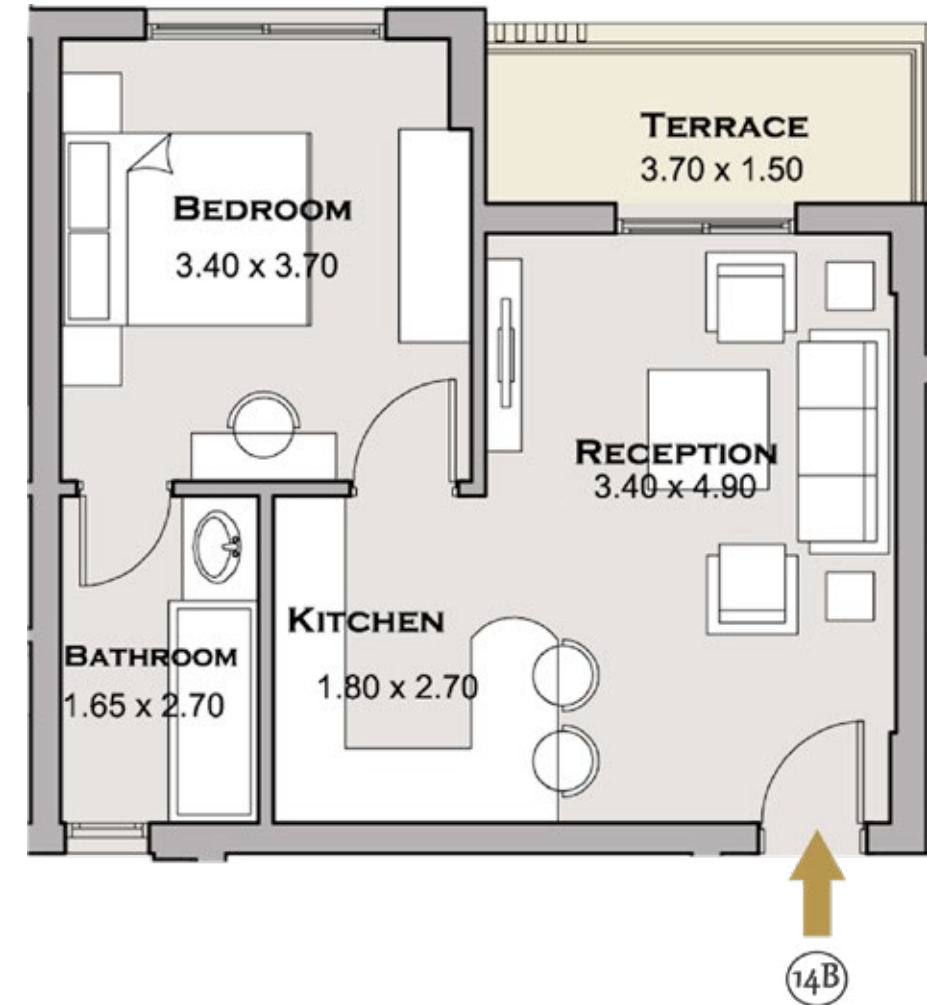
FIRST FLOOR

# FIRST FLOOR

## BLDGS. ST 01: ST 16

### APARTMENT 14 B

TOTAL GROSS AREA	61 m <sup>2</sup>
------------------	-------------------



DISCLAIMER  
1. Room dimensions are consistent with structural elements and do not include wall finishes or additional structural elements.  
2. Diagrams are not to scale and are for illustrative purpose only.  
3. MNHD reserves the right to make minor alterations.  
4. All rendering and other visual materials, designs, facades are for demonstrative purpose only and are subject to change.  
5. All units will be delivered without internal finishes "Brick Walls Only".

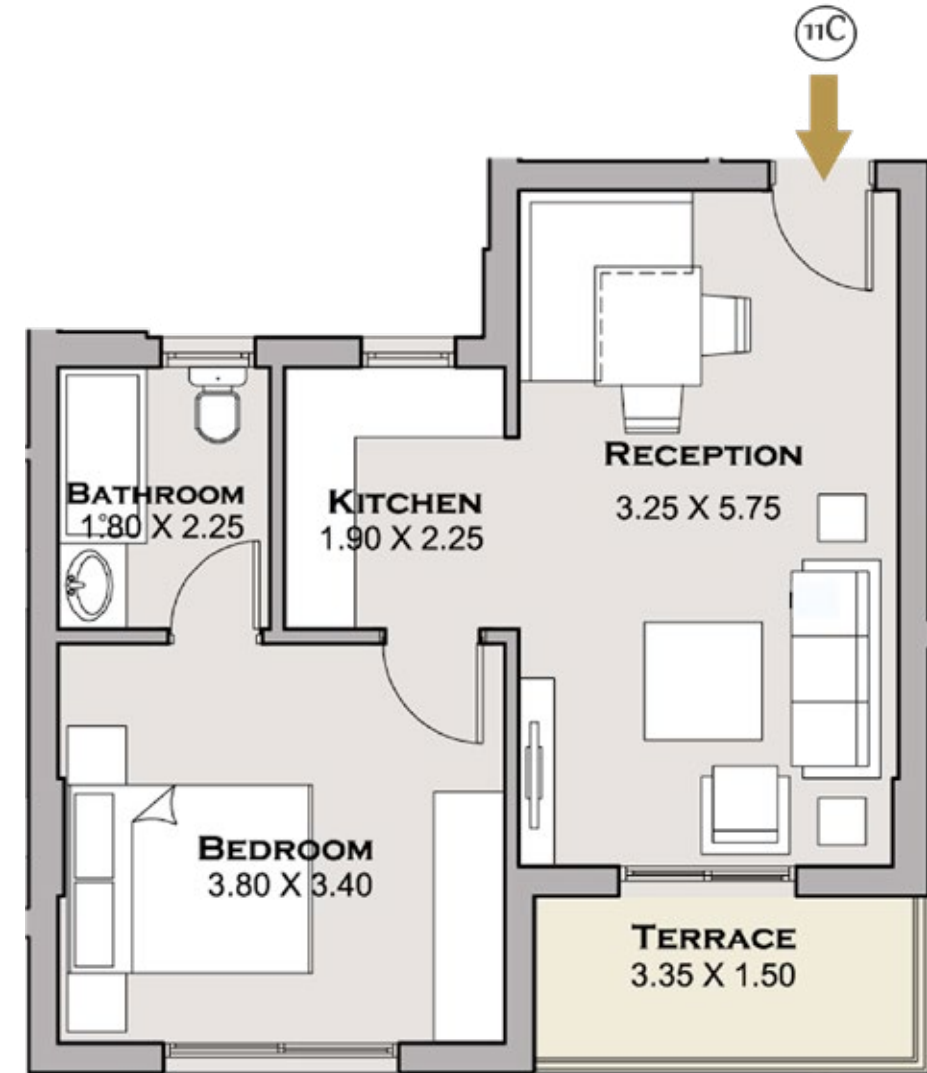
FIRST FLOOR

# FIRST FLOOR

# BLDGS. ST 01: ST 16

## APARTMENT 11C

TOTAL GROSS AREA	64 m <sup>2</sup>
------------------	-------------------



DISCLAIMER  
1. Room dimensions are consistent with structural elements and do not include wall finishes or additional structural elements.  
2. Diagrams are not to scale and are for illustrative purpose only.  
3. MNHD reserves the right to make minor alterations.  
4. All rendering and other visual materials, designs, facades are for demonstrative purpose only and are subject to change.  
5. All units will be delivered without internal finishes "Brick Walls Only".

FIRST FLOOR

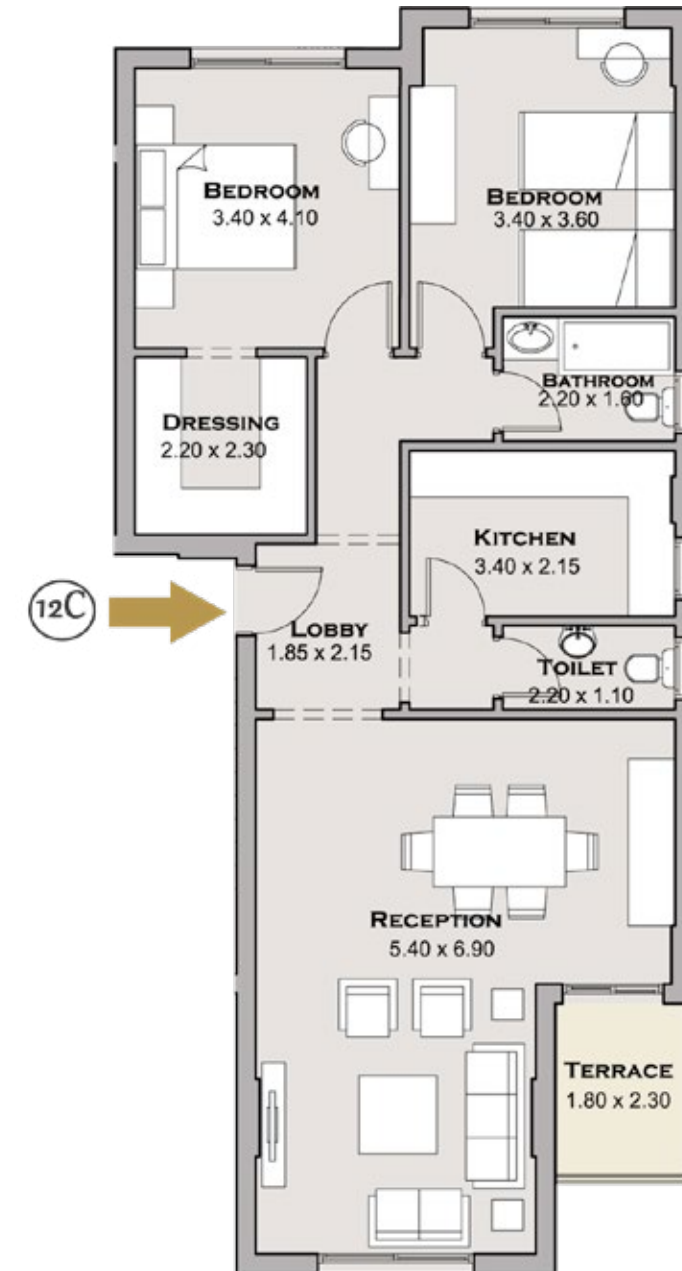


# FIRST FLOOR

## BLDGS. ST 01: ST 16

### APARTMENT 12 C

TOTAL GROSS AREA	122 m <sup>2</sup>
------------------	--------------------



FIRST FLOOR

#### DISCLAIMER

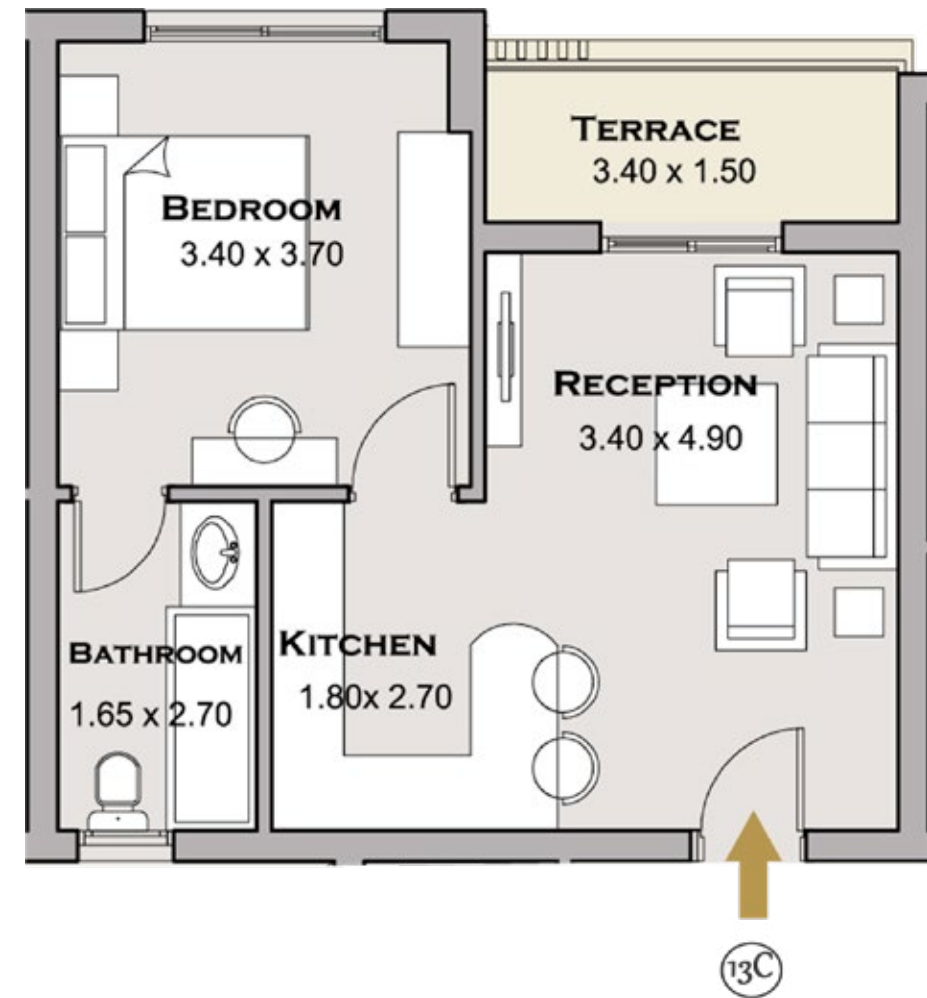
1. Room dimensions are consistent with structural elements and do not include wall finishes or additional structural elements.
2. Diagrams are not to scale and are for illustrative purpose only.
3. MNHD reserves the right to make minor alterations.
4. All rendering and other visual materials, designs, facades are for demonstrative purpose only and are subject to change.
5. All units will be delivered without internal finishes "Brick Walls Only".

# FIRST FLOOR

## BLDGS. ST 01: ST 16

### APARTMENT 13 C

TOTAL GROSS AREA	60 m <sup>2</sup>
------------------	-------------------



DISCLAIMER  
1. Room dimensions are consistent with structural elements and do not include wall finishes or additional structural elements.  
2. Diagrams are not to scale and are for illustrative purpose only.  
3. MNHD reserves the right to make minor alterations.  
4. All rendering and other visual materials, designs, facades are for demonstrative purpose only and are subject to change.  
5. All units will be delivered without internal finishes "Brick Walls Only".

FIRST FLOOR

# FIFTH FLOOR

# FIFTH FLOOR

## BLDGS. ST 01: ST 16



### DISCLAIMER

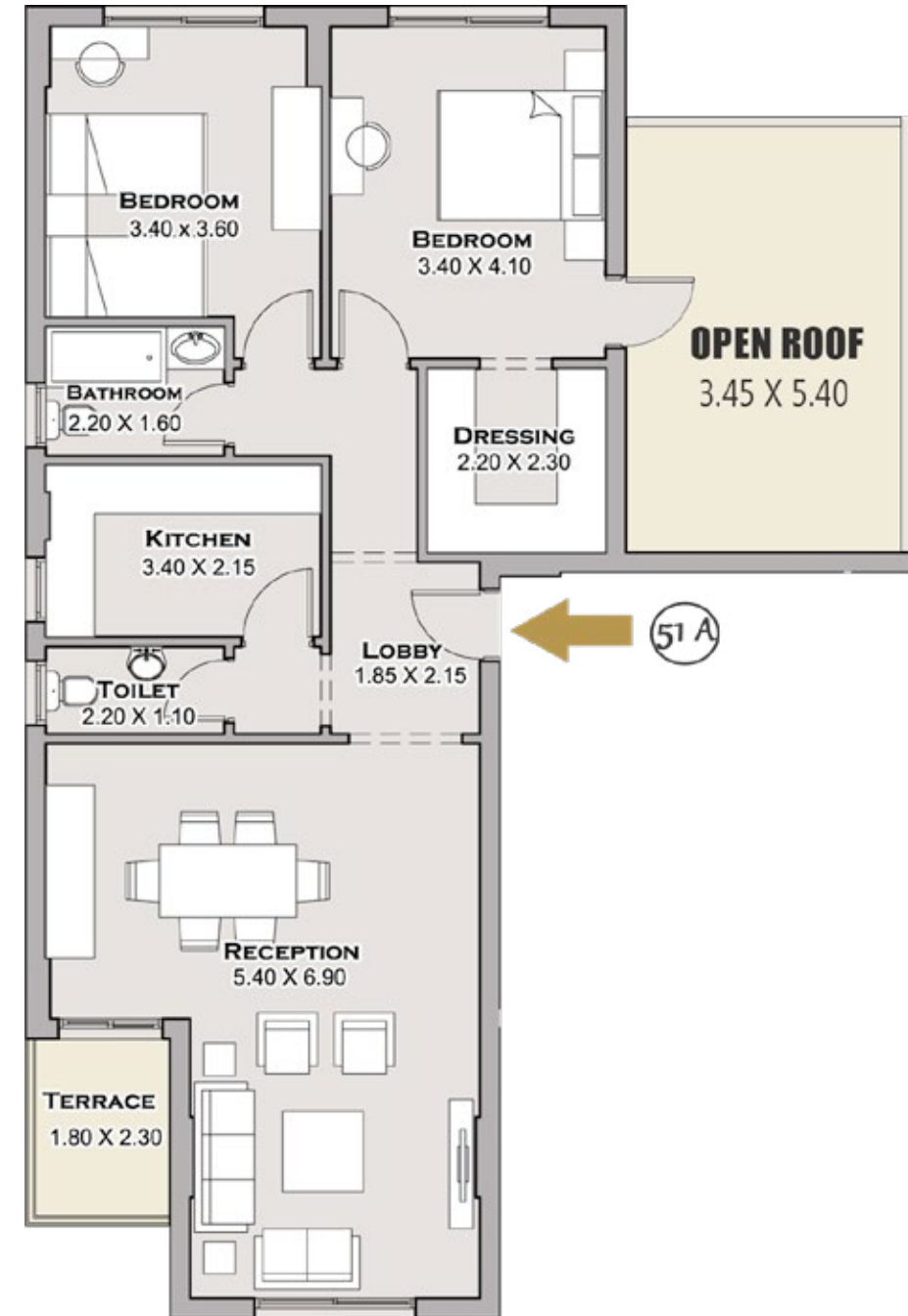
1. Room dimensions are consistent with structural elements and do not include wall finishes or additional structural elements.
2. Diagrams are not to scale and are for illustrative purpose only.
3. MNHD reserves the right to make minor alterations.
4. All rendering and other visual materials, designs, facades are for demonstrative purpose only and are subject to change.
5. All units will be delivered without internal finishes "Brick Walls Only".

# FIFTH FLOOR

## BLDGS. ST 01: ST 16

### APARTMENT 51 A

TOTAL GROSS AREA	126 m <sup>2</sup>
OPEN ROOF AREA	19 m <sup>2</sup>



FIFTH FLOOR

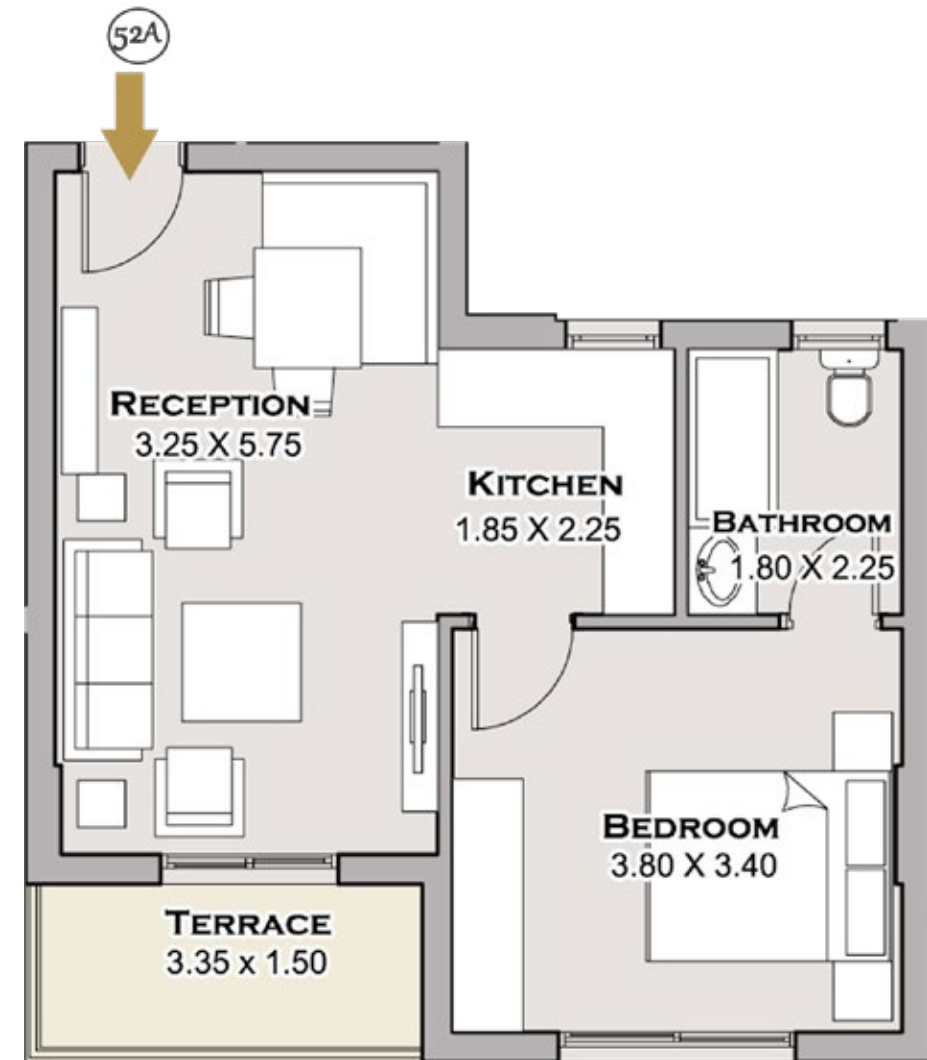
DISCLAIMER  
 1. Room dimensions are consistent with structural elements and do not include wall finishes or additional structural elements.  
 2. Diagrams are not to scale and are for illustrative purpose only.  
 3. MNHD reserves the right to make minor alterations.  
 4. All rendering and other visual materials, designs, facades are for demonstrative purpose only and are subject to change.  
 5. All units will be delivered without internal finishes "Brick Walls Only".

# FIFTH FLOOR

## BLDGS. ST 01: ST 16

### APARTMENT 52 A

TOTAL GROSS AREA	64 m <sup>2</sup>
------------------	-------------------



DISCLAIMER  
1. Room dimensions are consistent with structural elements and do not include wall finishes or additional structural elements.  
2. Diagrams are not to scale and are for illustrative purpose only.  
3. MNHD reserves the right to make minor alterations.  
4. All rendering and other visual materials, designs, facades are for demonstrative purpose only and are subject to change.  
5. All units will be delivered without internal finishes "Brick Walls Only".

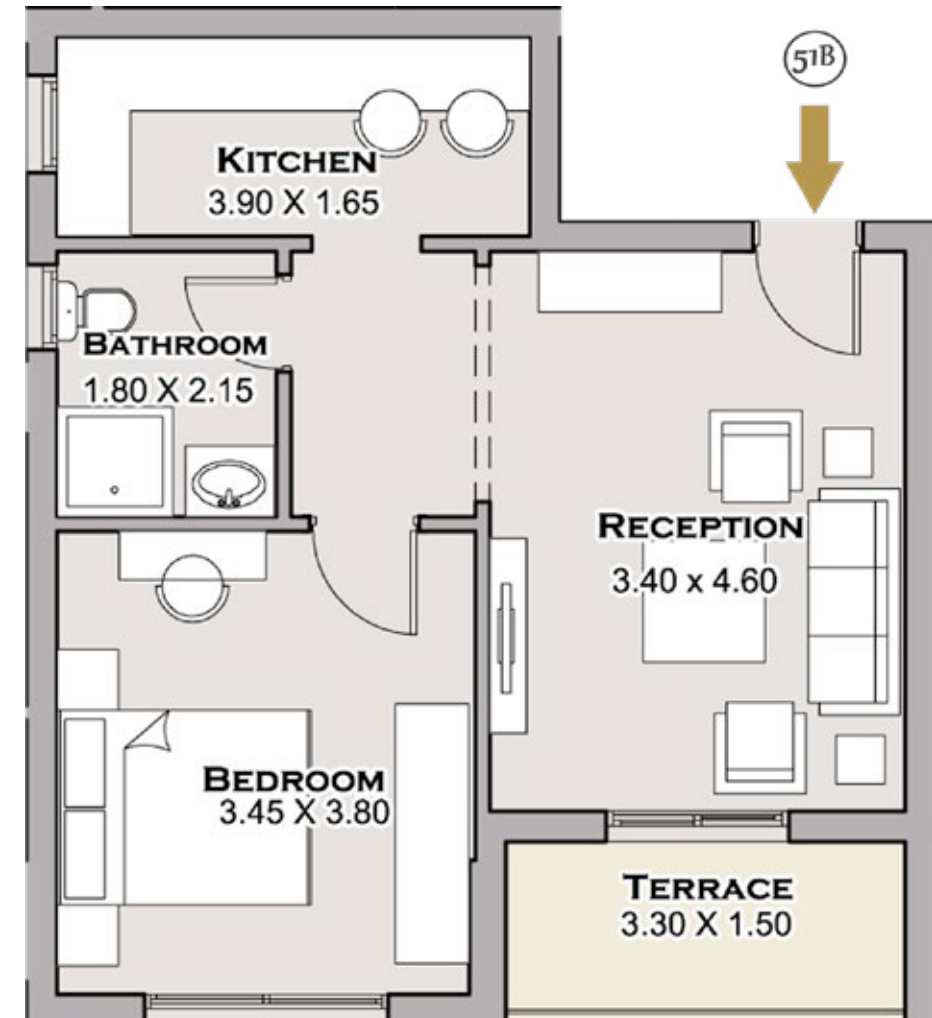
FIFTH FLOOR

# FIFTH FLOOR

## BLDGS. ST 01: ST 16

### APARTMENT 51B

TOTAL GROSS AREA	66 m <sup>2</sup>
------------------	-------------------



- DISCLAIMER
1. Room dimensions are consistent with structural elements and do not include wall finishes or additional structural elements.
  2. Diagrams are not to scale and are for illustrative purpose only.
  3. MNHD reserves the right to make minor alterations.
  4. All rendering and other visual materials, designs, facades are for demonstrative purpose only and are subject to change.
  5. All units will be delivered without internal finishes "Brick Walls Only".

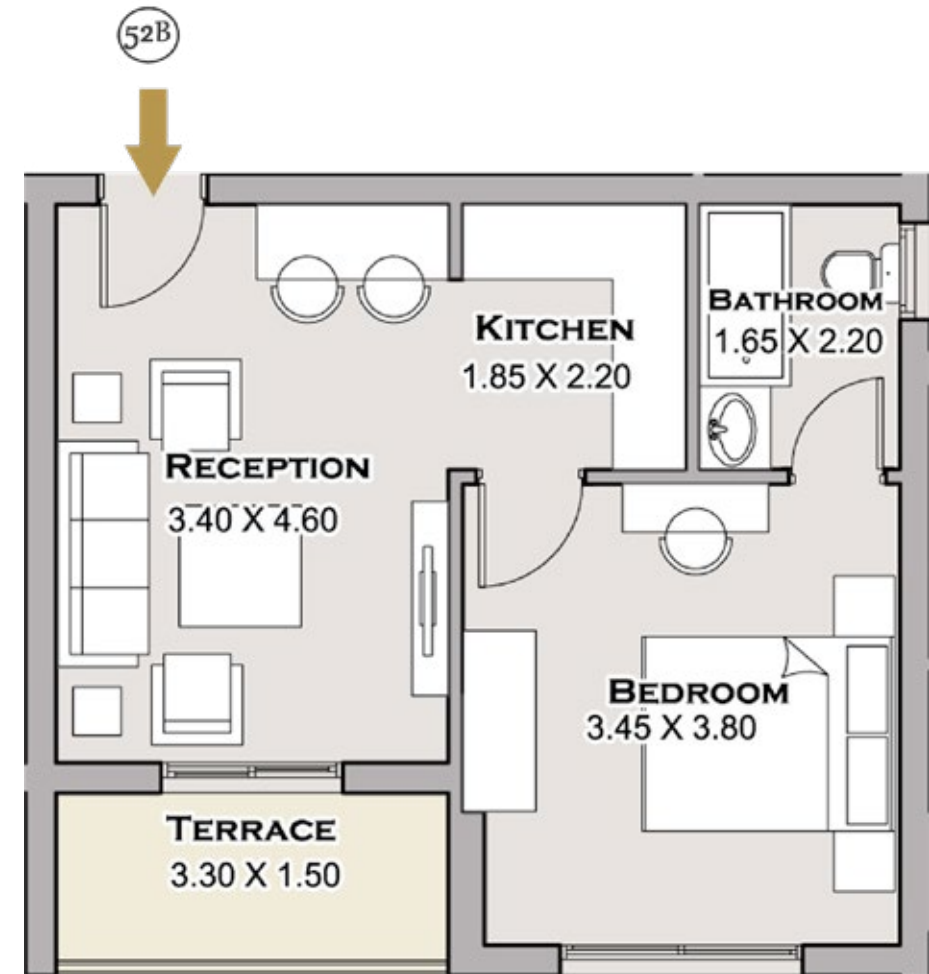
FIFTH FLOOR

# FIFTH FLOOR

# BLDGS. ST 01: ST 16

## APARTMENT 52 B

TOTAL GROSS AREA	58 m <sup>2</sup>
------------------	-------------------



- DISCLAIMER
- 1. Room dimensions are consistent with structural elements and do not include wall finishes or additional structural elements.
  - 2. Diagrams are not to scale and are for illustrative purpose only.
  - 3. MNHD reserves the right to make minor alterations.
  - 4. All rendering and other visual materials, designs, facades are for demonstrative purpose only and are subject to change.
  - 5. All units will be delivered without internal finishes "Brick Walls Only".

FIFTH FLOOR



# FIFTH FLOOR

## BLDGS. ST 01: ST 16

### APARTMENT 53 B

TOTAL GROSS AREA	63 m <sup>2</sup>
OPEN ROOF AREA	24 m <sup>2</sup>



DISCLAIMER  
1. Room dimensions are consistent with structural elements and do not include wall finishes or additional structural elements.  
2. Diagrams are not to scale and are for illustrative purpose only.  
3. MNHD reserves the right to make minor alterations.  
4. All rendering and other visual materials, designs, facades are for demonstrative purpose only and are subject to change.  
5. All units will be delivered without internal finishes "Brick Walls Only".

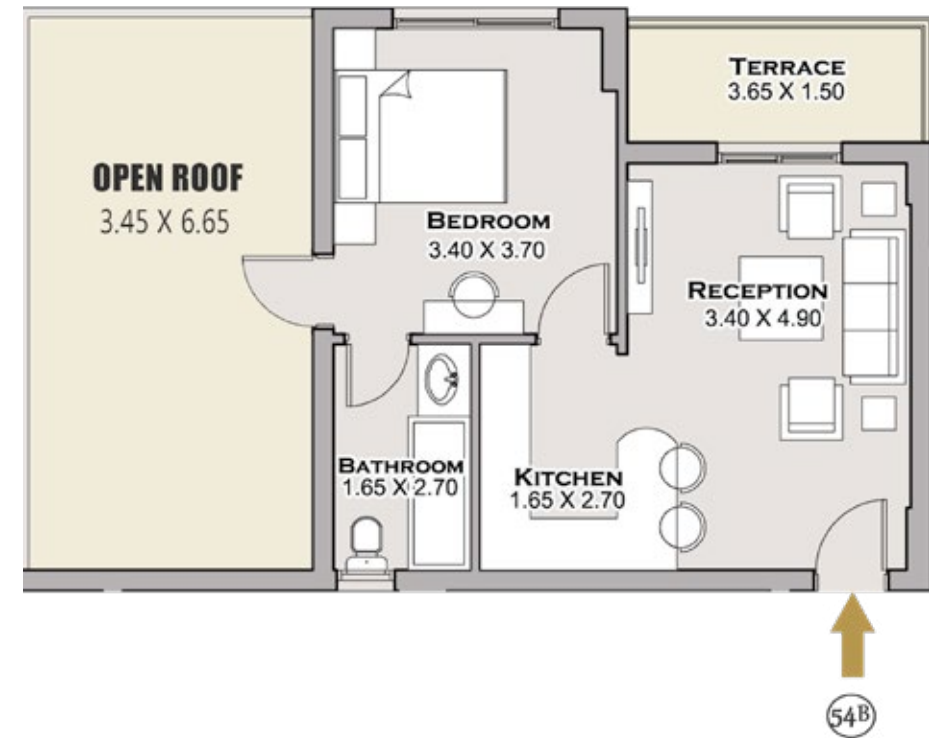
FIFTH FLOOR

# FIFTH FLOOR

## BLDGS. ST 01: ST 16

### APARTMENT 54 B

TOTAL GROSS AREA	62 m <sup>2</sup>
OPEN ROOF AREA	24 m <sup>2</sup>



DISCLAIMER  
1. Room dimensions are consistent with structural elements and do not include wall finishes or additional structural elements.  
2. Diagrams are not to scale and are for illustrative purpose only.  
3. MNHD reserves the right to make minor alterations.  
4. All rendering and other visual materials, designs, facades are for demonstrative purpose only and are subject to change.  
5. All units will be delivered without internal finishes "Brick Walls Only".

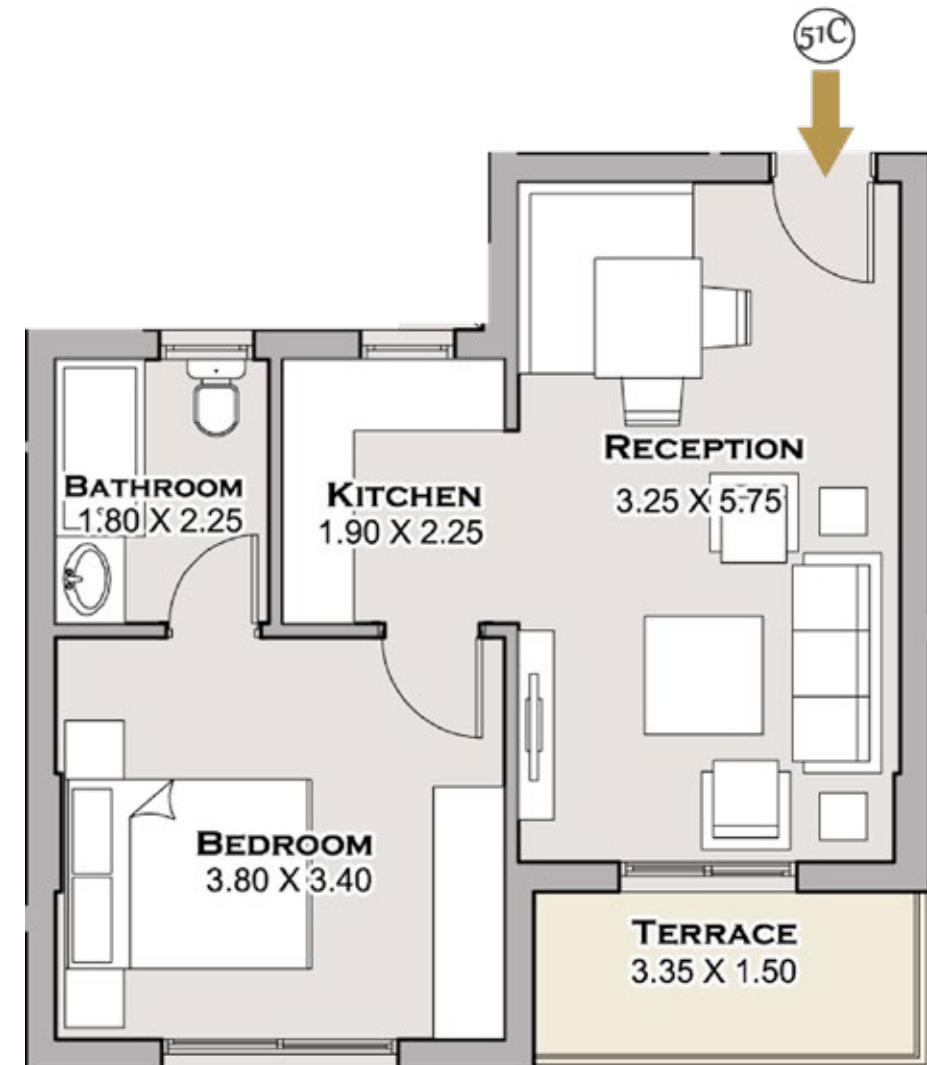
# FIFTH FLOOR

# FIFTH FLOOR

# BLDGS. ST 01: ST 16

## APARTMENT 51C

TOTAL GROSS AREA	64 m <sup>2</sup>
------------------	-------------------



DISCLAIMER  
1. Room dimensions are consistent with structural elements and do not include wall finishes or additional structural elements.  
2. Diagrams are not to scale and are for illustrative purpose only.  
3. MNHD reserves the right to make minor alterations.  
4. All rendering and other visual materials, designs, facades are for demonstrative purpose only and are subject to change.  
5. All units will be delivered without internal finishes "Brick Walls Only".

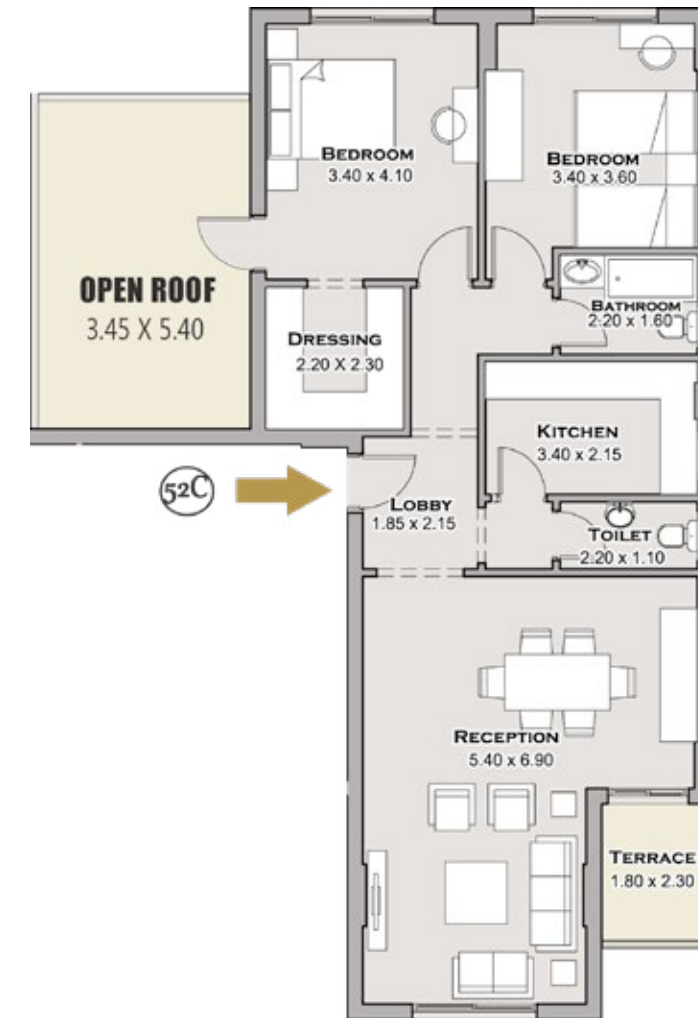
FIFTH FLOOR

# FIFTH FLOOR

## BLDGS. ST 01: ST 16

### APARTMENT 52 C

TOTAL GROSS AREA	125 m <sup>2</sup>
OPEN ROOF AREA	19 m <sup>2</sup>



- DISCLAIMER
1. Room dimensions are consistent with structural elements and do not include wall finishes or additional structural elements.
  2. Diagrams are not to scale and are for illustrative purpose only.
  3. MNHD reserves the right to make minor alterations.
  4. All rendering and other visual materials, designs, facades are for demonstrative purpose only and are subject to change.
  5. All units will be delivered without internal finishes "Brick Walls Only".

# FIFTH FLOOR

